

JUST THE FACTS – Writing your Paper

PRO/CON RESEARCH PAPER



WRITING YOUR PAPER

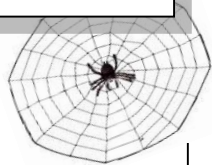
- **Introduction (first Paragraph)**
 - Introduce your issue
 - Why is it important?
 - Background information
 - Not a 6- Sentence Quotation Sandwich
 - OK to pose a question
- **Argument #1 - In Support of -----**
PRO SIDE (2- 6 Sentence Quotation Sandwiches)
 - Number your sentences
 - **Two** different sources must be used.
 - Refer to your outline
- **Argument #2: In Opposition of -----**
CON SIDE (2- 6 Sentence Quotation Sandwiches)
 - Number your sentences
 - **Two** different sources must be used
 - Refer to your outline
- **Thesis (2- 6 Sentence Quotation Sandwiches)**
 - 1st 6-Sentence Quotation Sandwich - Topic Sentence and Elaborator & Claim should all directly relate to your THESIS
 - 2nd - 6-Quotation Sandwich transition in to your second claim
 - Number your sentences
 - **Two** different sources must be used
 - Refer to your Outline
- **Conclusion**
 - One Paragraph (5 -8 Sentences)
 - Not 6-Quotation Sandwich
 - Summarize and sell your point of view.
- **OTHER STUFF**
 - Must write in the 3rd person
 - NO - I, we, they think, feel, believe etc.
 - Follow MLA rules
 - Use the Rubric to Check your work
 - Proof Read!
 - Use your own Voice

KEY IDEAS

- ✿ **Thesis**- your opinion stated as a fact - Big Umbrella - spokes are your claims.
- ✿ Written in 6-Sentence Quotation Sandwich Format
- ✿ MLA Formatting
- ✿ Minimum of **5 Sources** - Each Section needs 2 different sources!
- ✿ Work Cited - Alphabetical & hanging indents

Web Help!!!

- www.easybib.com
- www.owl.english.purdue.edu
- www.mrszickert.weebly.com



Unit Learning Goal:

Using research collected in Evernote, students will select appropriate evidence to produce a properly formatted and clearly written Pro/Con Research paper using 6th edition MLA Style including proper parenthetical citation. Paper will be written using 6-Sentence Quotation Sandwiches including an introduction, two arguments, a thesis, a conclusion and a Work Cited page.

Paper Due Date:

